

GENERAL NOTES

- All plates shown are 20 gauge ILS plates, unless otherwise noted. Plates to be applied on both faces of each joint and centered, unless plate position is dimensioned.
- Provide continuous lateral bracing to bottom chord at maximum intervals of 10'.
- Design is based substantially on current applicable standards of T.P.I. and N.D. at the date of drawing.
- Denotes continuous lateral bracing in addition to that described in General Notes 2.
- Provide continuous lateral support of top chord by means of plywood sheathing or properly spaced purlins.

DESCRIPTION: **PANNING** DATE: **6/2/87**

SPAN: **24'-0"** DRAWING NO.: **33085** SHT. **9 OF 15**

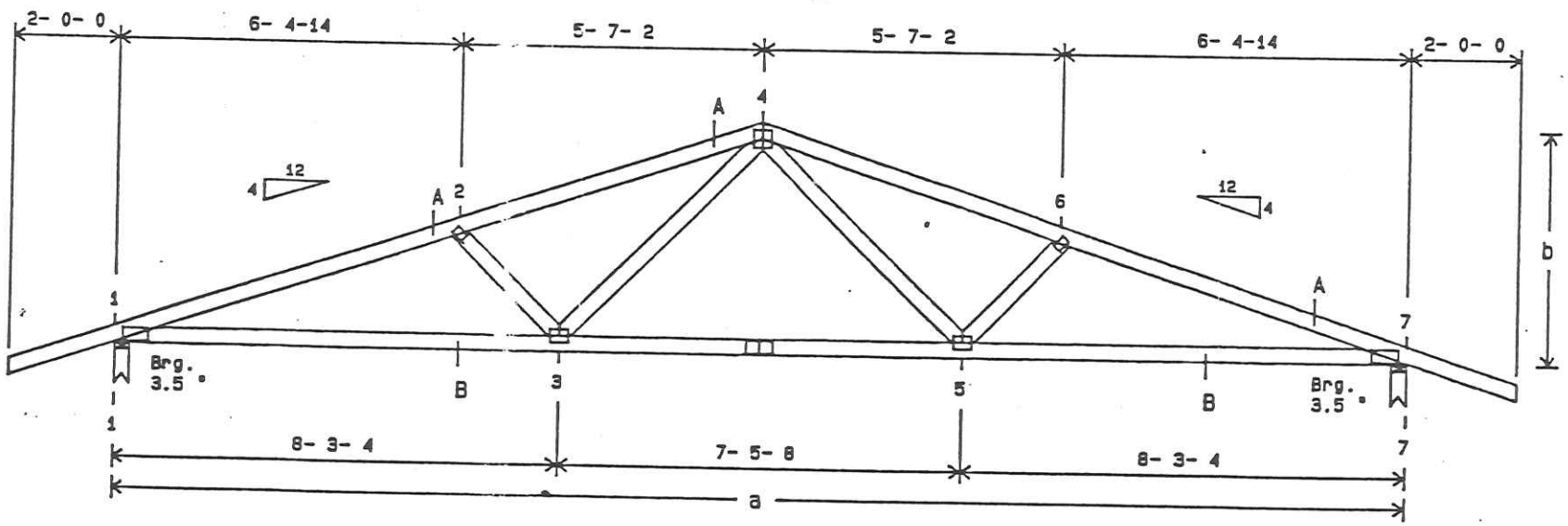
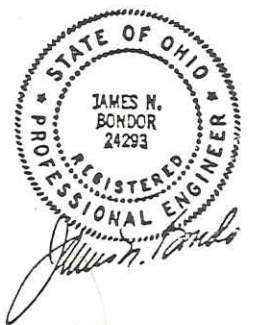
PITCH/DEPTH: **4/12**

DRAWN BY: **WRS** ENG. BY: **JWA** CHECKED BY: **JFR**

ATTENTION: Erection, Handling, Safety Precautions, Temporary or Permanent Bracing - trusses are not the responsibility of the Truss Designer, Metal Connector Plate Manufacturer, or the Truss Manufacturer and therefore are not a part of these engineering drawings. Trusses are designed as individual components. All lateral bracing specified on these truss drawings are intended to provide lateral restraint for individual truss members only. The design, amount and proper installation of temporary or permanent bracing for whatever reason is the sole responsibility of the designer or builder of the complete structure. Adequate Bracing is Always Required. Competent professional advice should always be obtained relative to truss bracing and erection requirements.

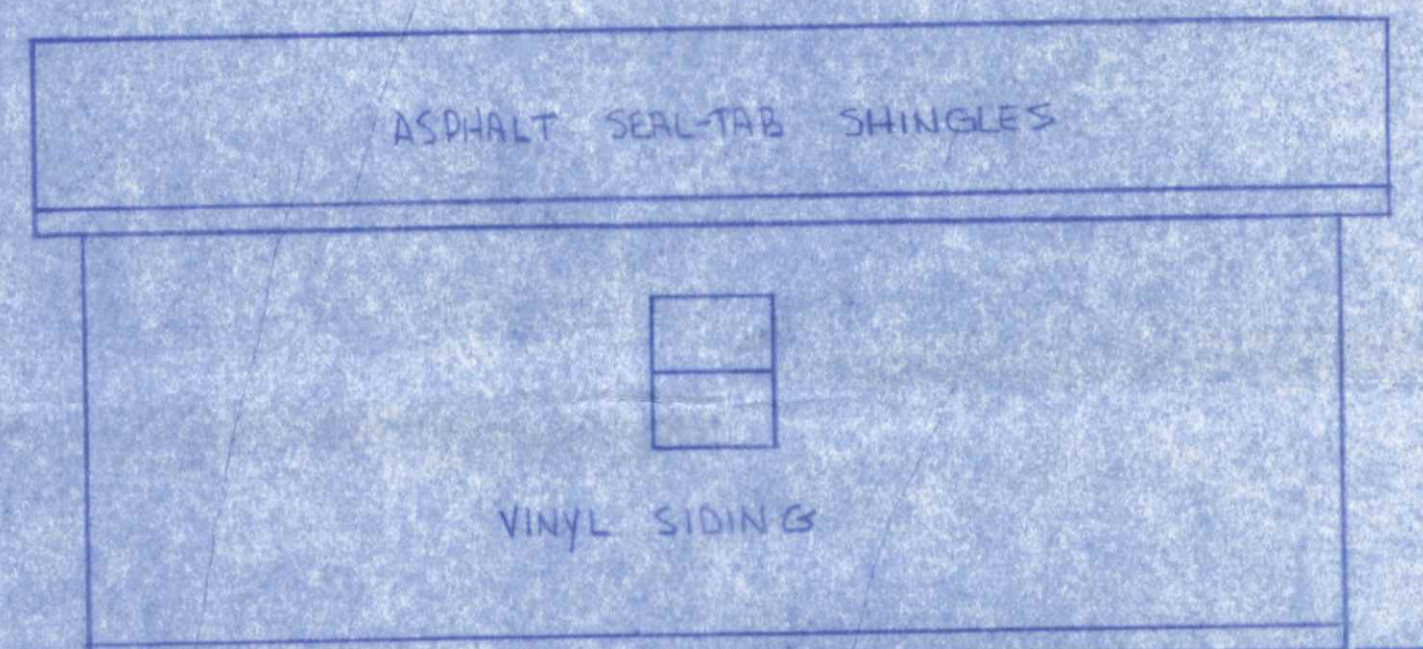
Uniform Loading	* Plates *	* Dimensions *	* Splice Plate *	CHORDS A	2x4 So. Pine KD 15	No. 2
Top Live: 25.0	1) 3.0 x 6.0	5) 3.0 x 4.0	a) 24-0-0	CHORDS B	2x4 So. Pine KD 15	No. 2 Danse
Top Dead: 10.0	2) 3.0 x 2.0	6) 3.0 x 2.0	b) 4-3-15	WEBS	2x4 So. Pine KD 15	No. 3
Bot Live: 10.0	3) 3.0 x 4.0	7) 3.0 x 6.0	(3.5) 3x6 20GA			
Bot Dead: 10.0	4) 4.0 x 4.0					
Spacing ("O.C.): 24.0	LEFT HEEL HT. 3	-15				
Duration Factor: 1.15	RIGHT HEEL HT. 3	-15				
Number of Plies: 1						
Reaction At 1: 1320						
Reaction At 7: 1320						

IMPORTANT: READ ALL NOTES ON THIS DRAWING



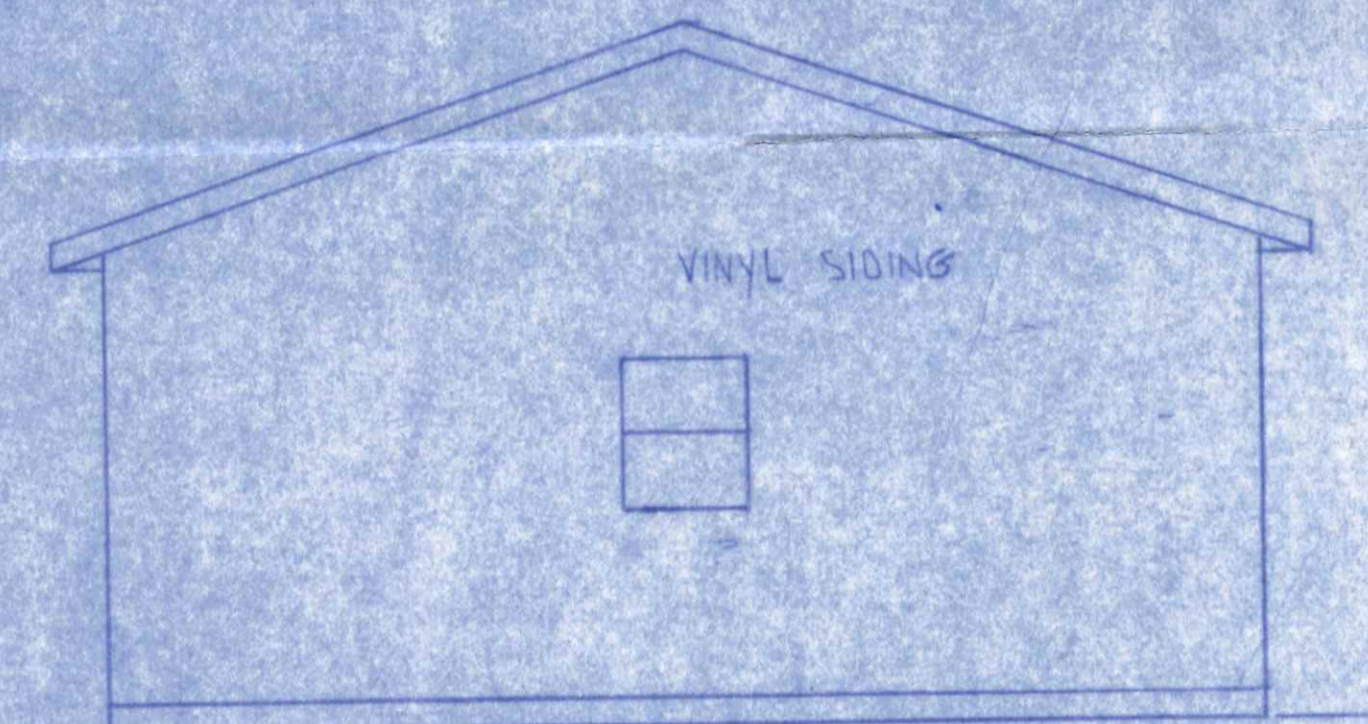
Total Span = 24ft 0in 0/16
 Total Height = 4ft 31in 15/16
 301 ID = W241
 APPROX. WGT. EACH PLY 111 lbs.



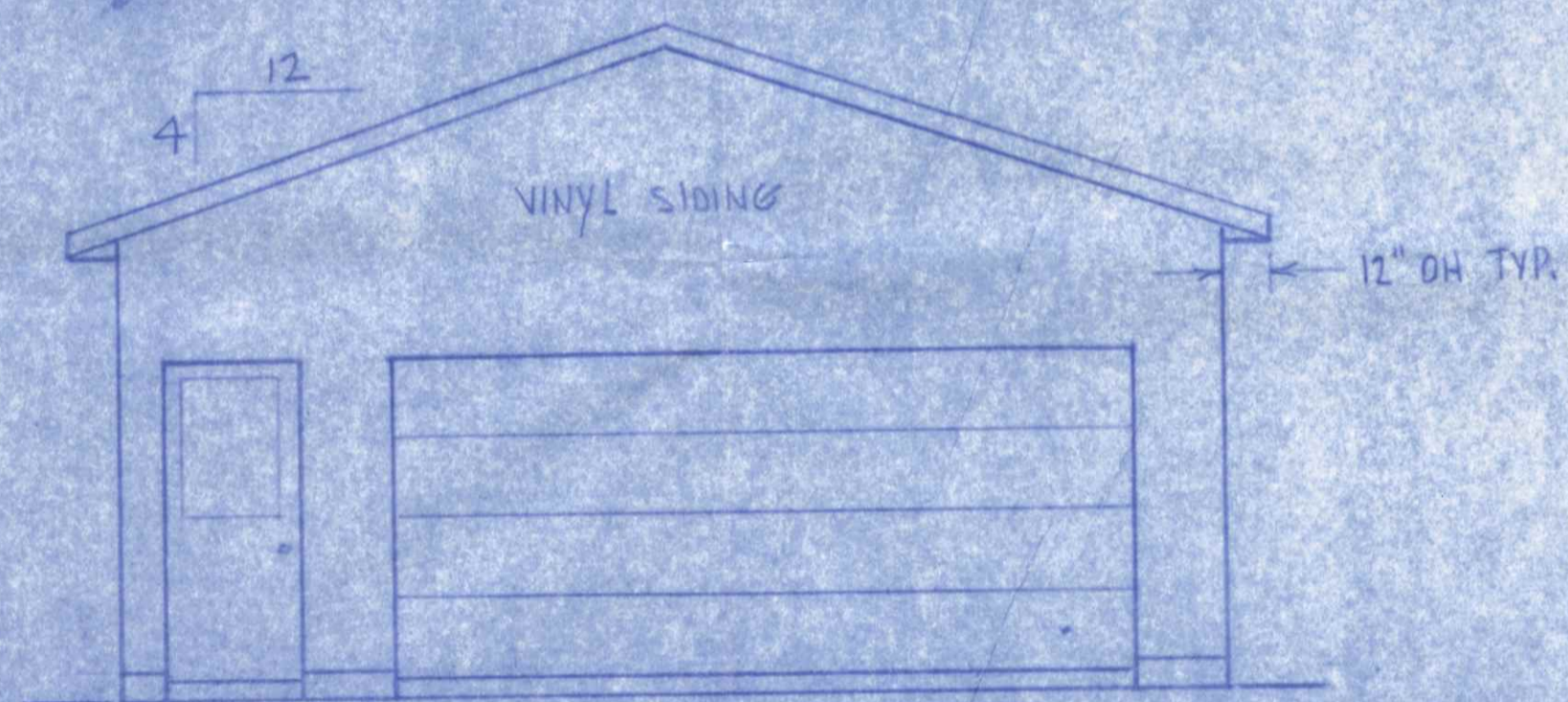


RIGHT & LEFT SIDES - TYPICAL

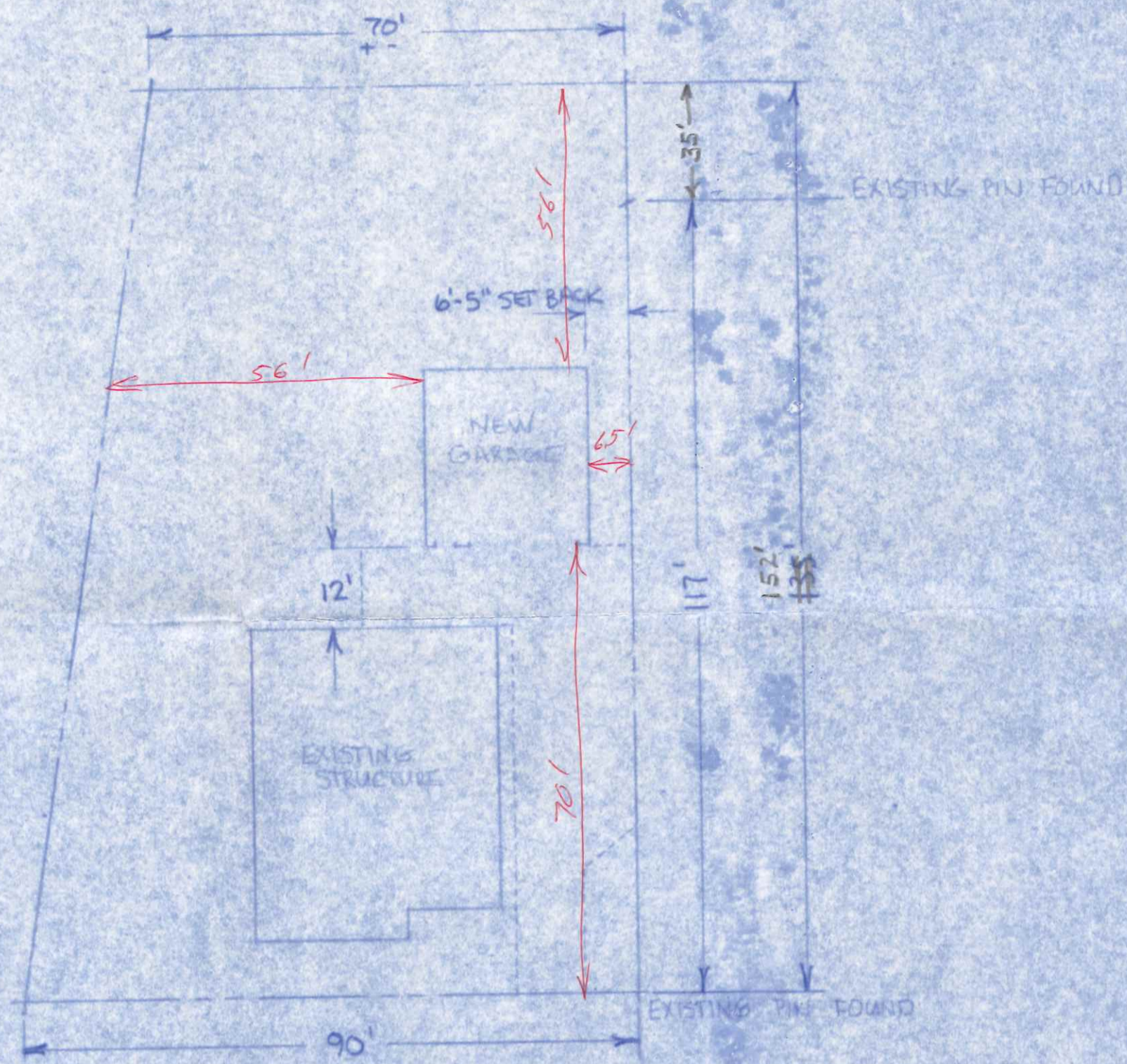
ELEVATION DRAWINGS
SCALE 1/8" = 1'-0"



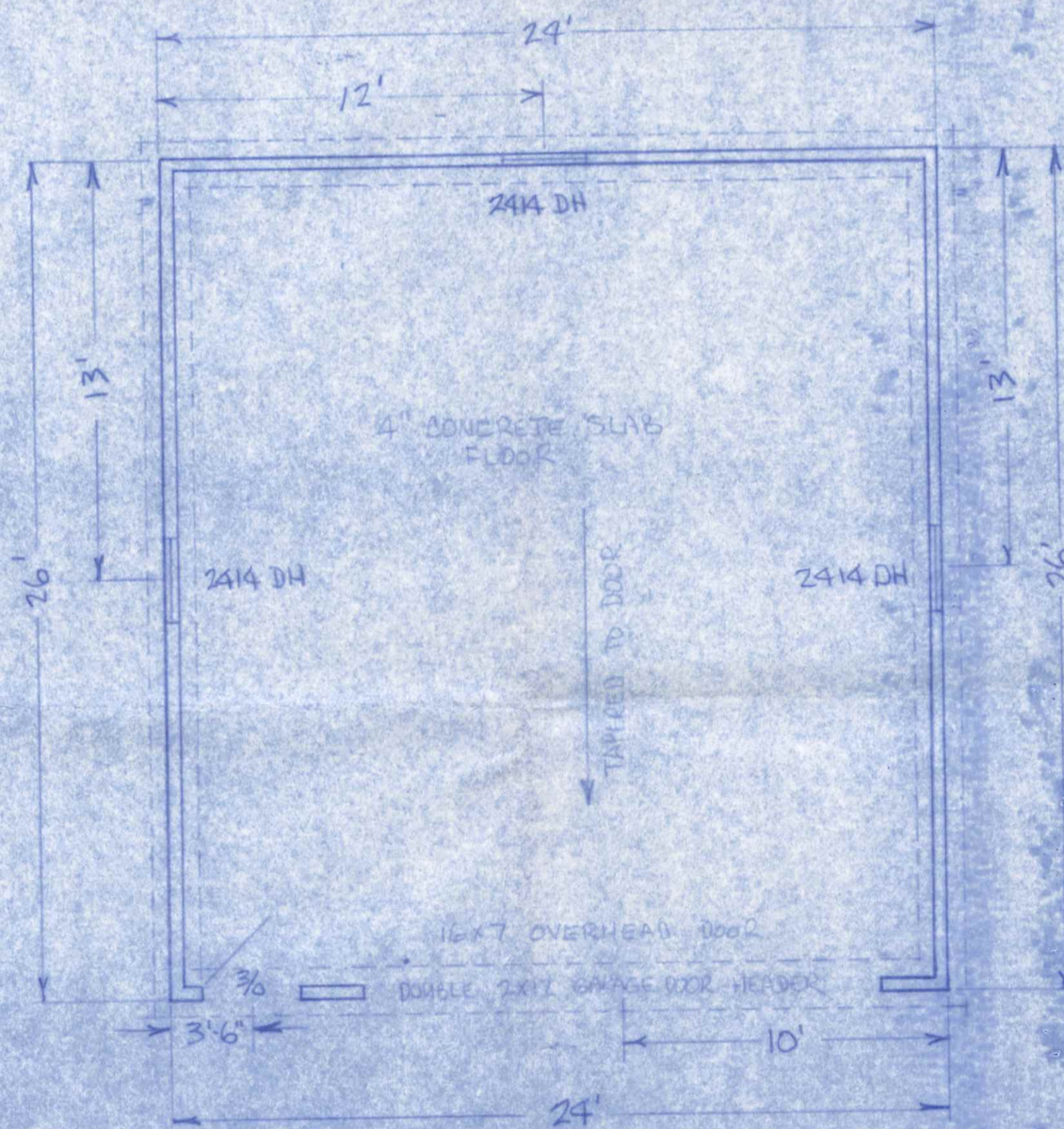
REAR



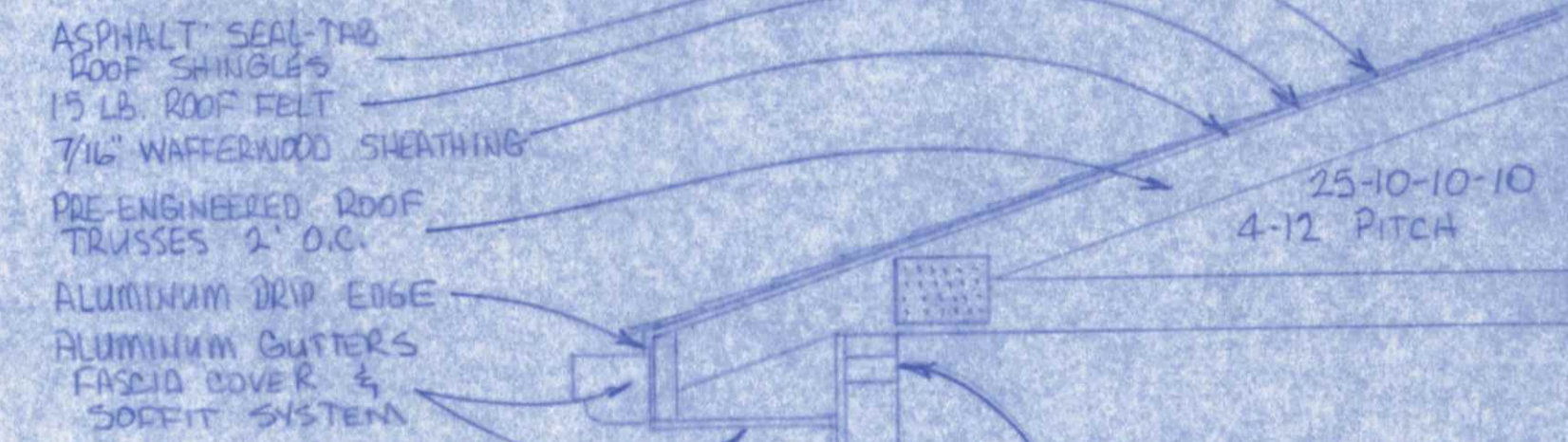
FRONT



SOUTH PERRY ST.
PLOT PLAN
SCALE 1" = 20'



FLOOR PLAN
SCALE 1/4" = 1'



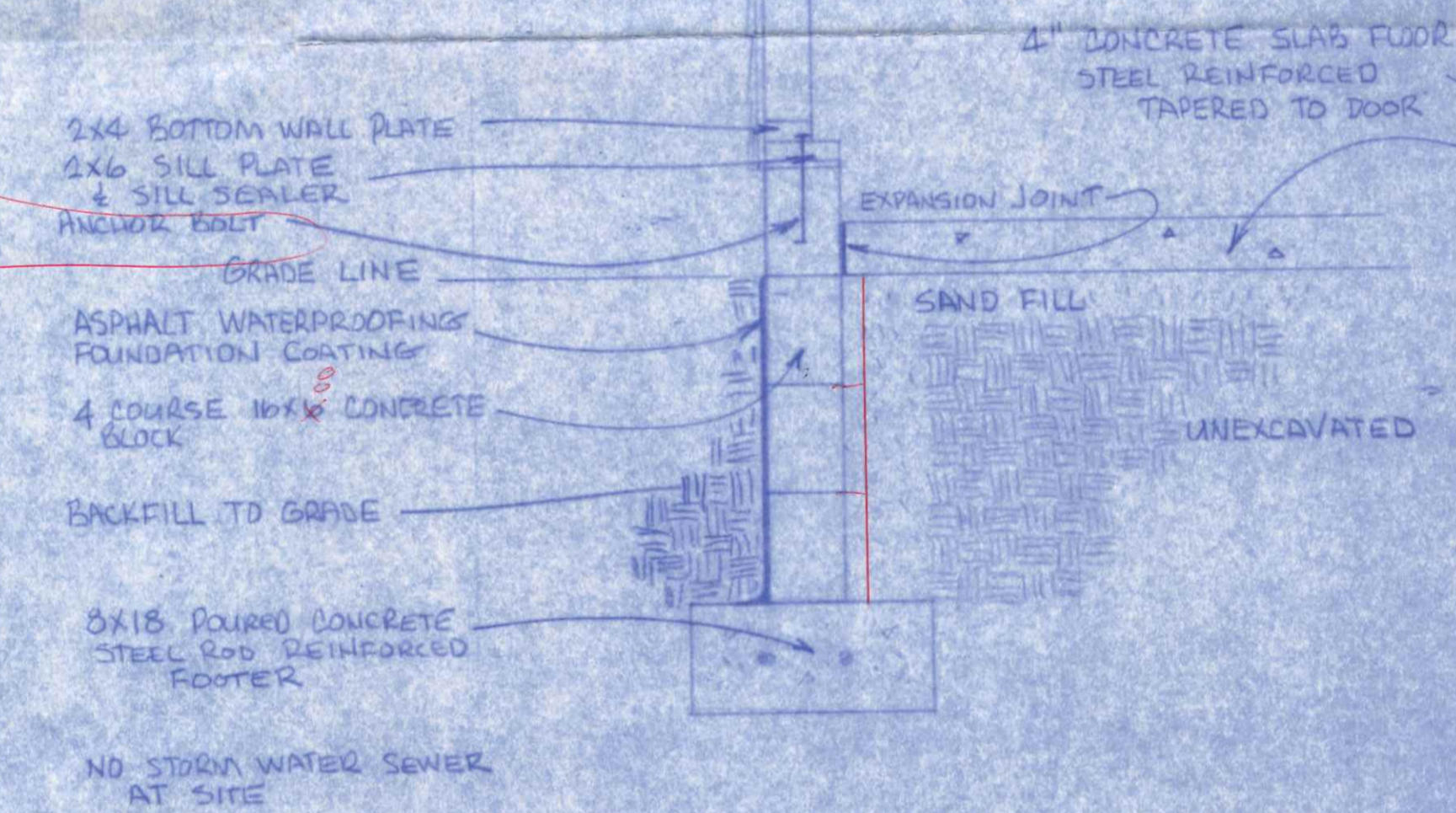
DOUBLE 2x4 TOP PLATE

2x4-9' STUDS
16" O.C. TYP.

1/2" TAP-R FOIL-FACED
INSUL. FOAM SHEATHING
STEEL CORNER BRACINGS

DOUBLE-5 NON-INSUL.
VINYL SIDING

1 1/2" x 1.8"



TYPICAL WALL SECTION
SCALE 1" = 1'

24x26 GARAGE	PAGE 1 of 1
WALT PANNING 419 S. PERRY ST. NAPOLEON, OHIO	7-10-87